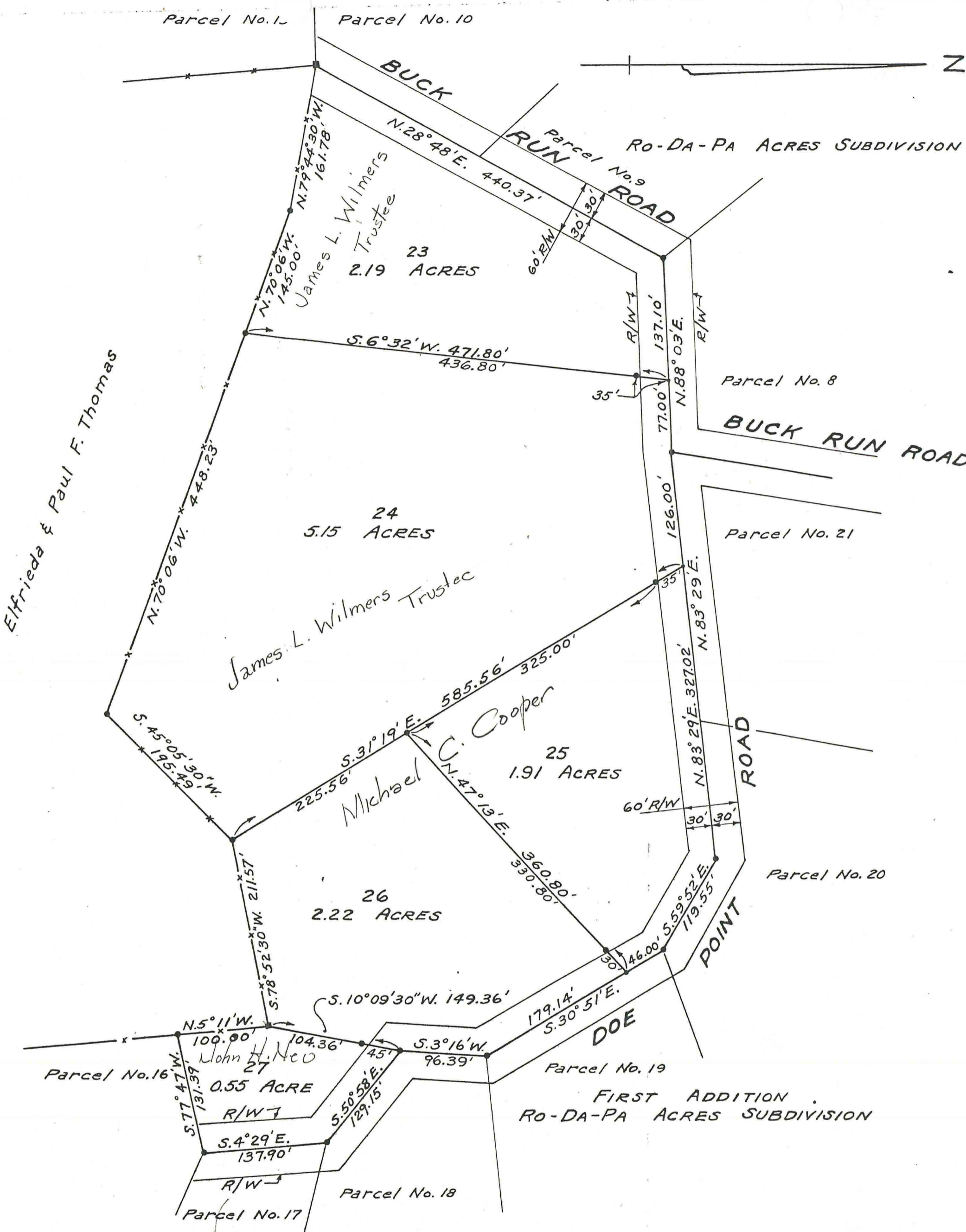


Sheet 7 - Second Addition to Ro-Da-Pa Acres Subdivision
 Scale 1" = 100'



NOTES:

1. The "Second Addition to Ro-Da-Pa Acres Subdivision" shown on this plat contains a total of 12.02 acres, which is shown as a 12.02 acre tract on the plat of the "First Addition to Ro-Da-Pa Acres Subdivision", a copy of which is recorded in Plat Book 5, Pages 30 & 31, in the office of the Recorder of Brown County, Ohio.
2. All parcels of land contained in the "Second Addition to Ro-Da-Pa Acres Subdivision" are subject to easements and rights of ways for the roads as shown on this plat of said addition.
3. The ownership of any parcel of land in the "Second Addition to RO-Da-Pa Acres Subdivision" includes an easement and right of way for the purpose of access in, upon and over the roads shown on this plat of said addition and also on the plats of "Ro-Da-Pa Acres Subdivision" and the "First Addition to Ro-Da-Pa Acres Subdivision" recorded in Plat Book 5, Page 19, and Plat Book 5, Pages 30 and 31, respectively, in the office of the Recorder of Brown County, Ohio, until such time the roads are accepted by the Board of County Commissioners as public roads.
4. All parcels of land contained in the "Second Addition to Ro-Da-Pa Acres Subdivision" are subject to the protective covenants and restrictions specified on Sheet 2 of the plat entitled "Plat of First Addition to Ro-Da-Pa Acres Subdivision", recorded in Plat Book 5, Page 30, in the office of the Recorder of Brown County, Ohio.